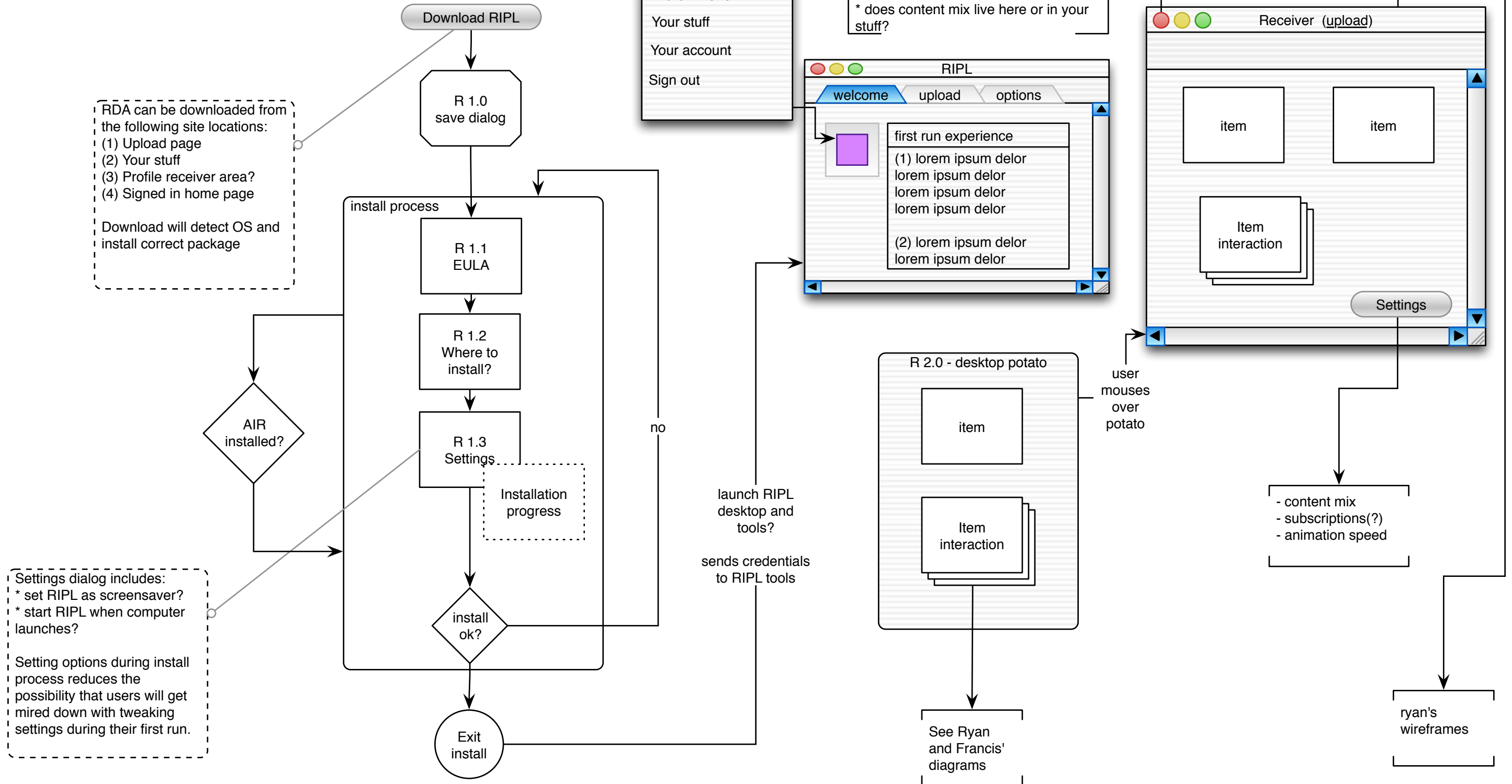
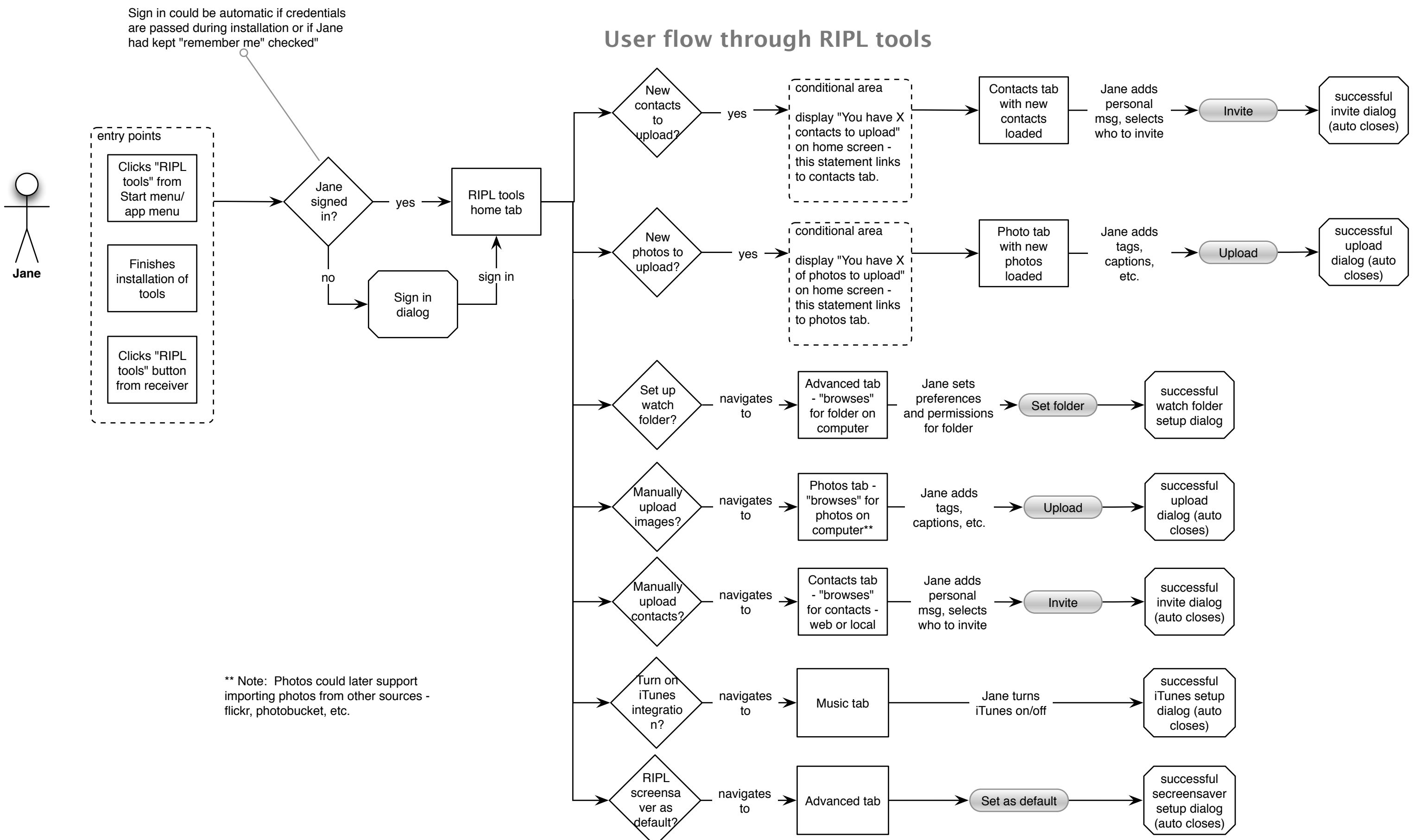


# RIPL web and desktop client interactions



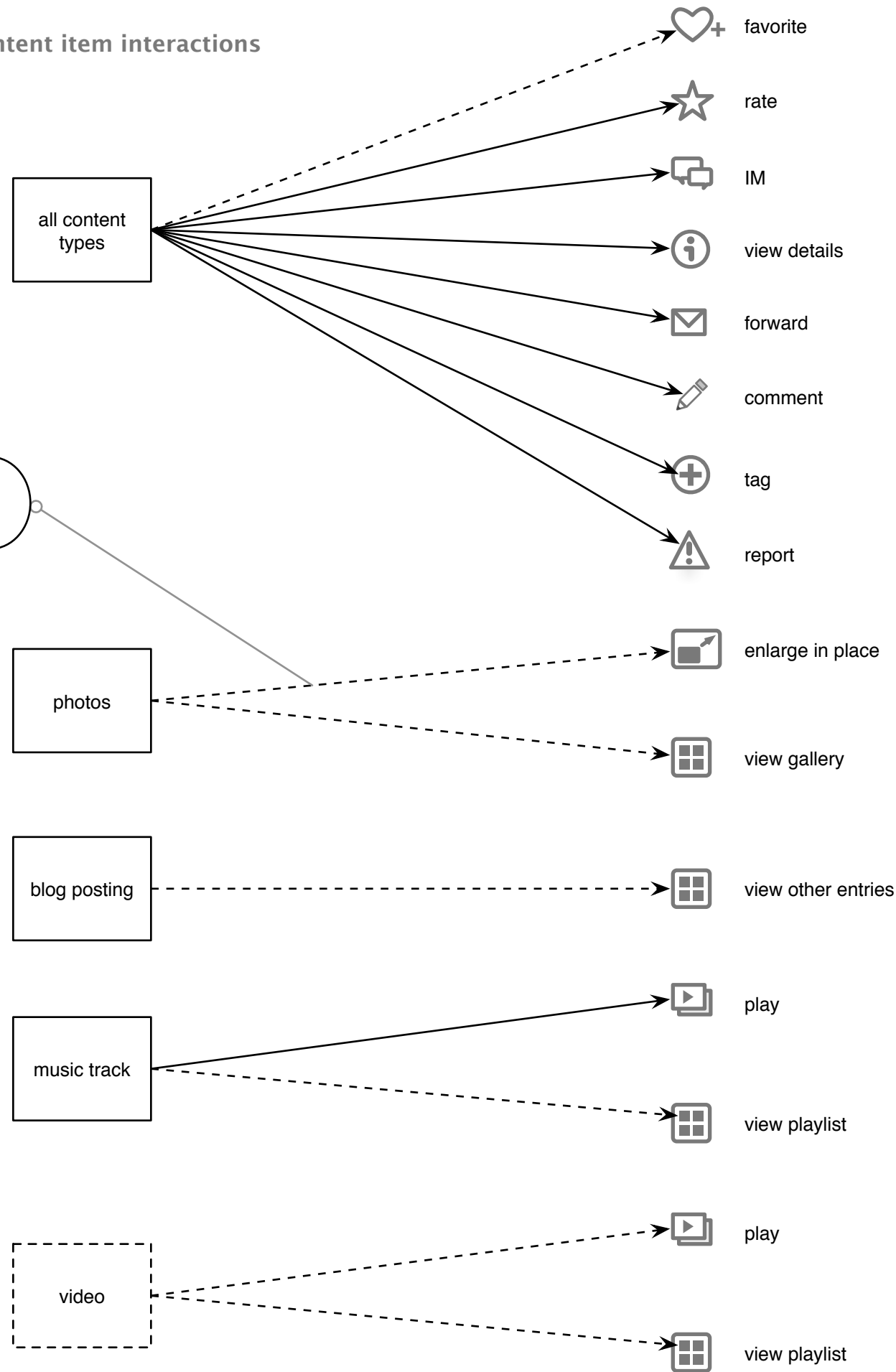
\* importing stuff?  
 \* music tab?  
 \* address case where screensaver isn't enabled  
 - receiver settings are  
 - receiver sizing (potato, medium, full size) - also content interaction sizes would change (animation scheme changing on certain sizes)

## User flow through RIPL tools



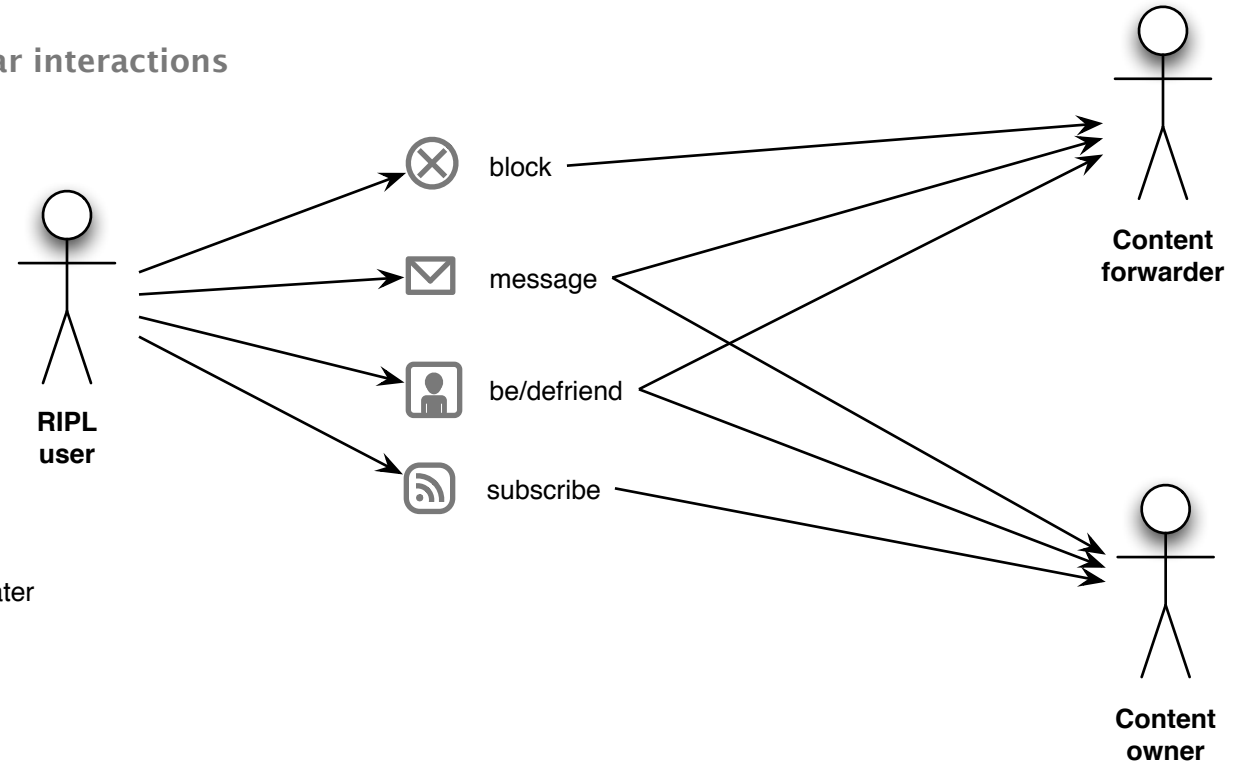
# RIPL (receiver) interaction map

## Content item interactions



Dotted lines indicate future functionality or content types that we do not yet support

## Avatar interactions



# Future desktop receiver (RIPL) interactions

Widget/small receiver (320x480)

